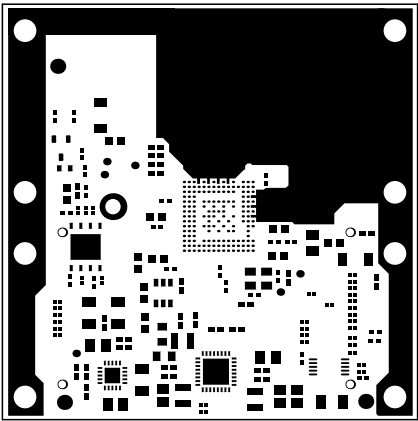
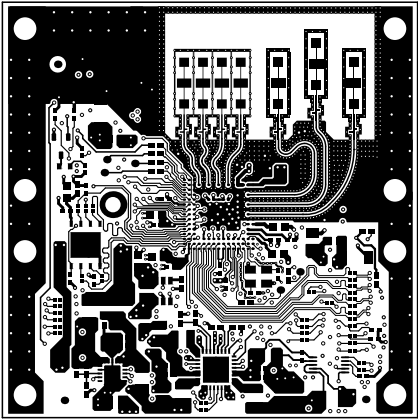


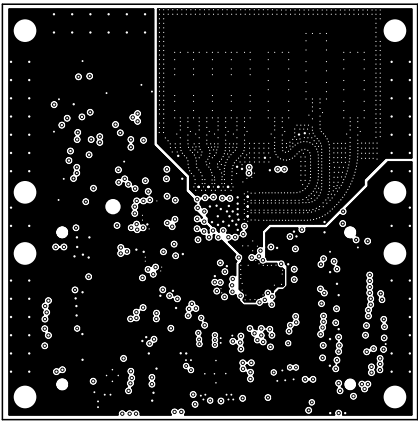
ALL ARTWORK VIEWED FROM TOP SIDE	BOARD #: PROC073	REV: A	SUN REV: Not In VersionControl
LAYER NAME = Top Overlay	TID #: N/A		
PLOT NAME = Top Overlay	GENERATED : 8/28/2018 2:54:28 PM	TEXAS INSTRUMENTS	



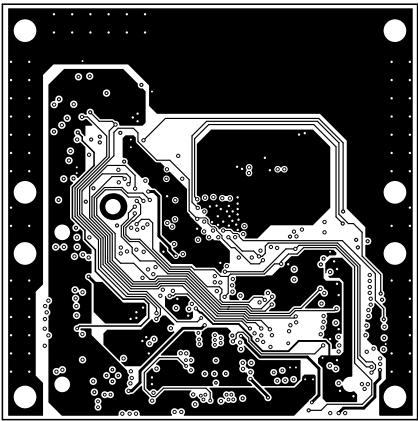
ALL ARTWORK VIEWED FROM TOP SIDE	BOARD #: PROC073	REV: A	SUN REV: Not In VersionControl
LAYER NAME = Top Solder	TID #: N/A		
PLOT NAME = Top Solder Mask	GENERATED : 8/28/2018 2:54:30 PM		TEXAS INSTRUMENTS



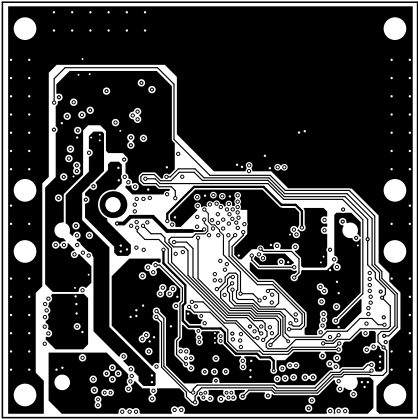
ALL ARTWORK VIEWED FROM TOP SIDE	BOARD #: PROC073	REV: A	SUN REV: Not In VersionControl
LAYER NAME = Top Layer	TID #: N/A		
PLOT NAME = Top Layer	GENERATED : 8/28/2018 2:54:31 PM		TEXAS INSTRUMENTS



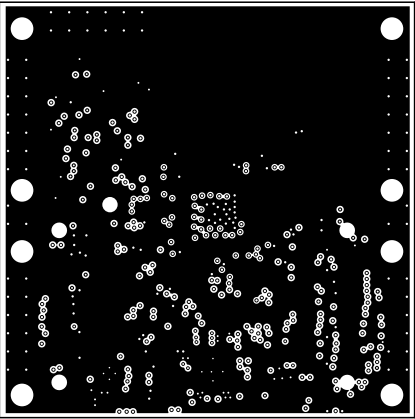
ALL ARTWORK VIEWED FROM TOP SIDE	BOARD #: PROC073	REV: A	SUN REV: Not In VersionControl
LAYER NAME = Layer 2 - GND1	TID #: N/A		
PLOT NAME = Signal Layer 1	GENERATED : 8/28/2018 2:54:32 PM		TEXAS INSTRUMENTS



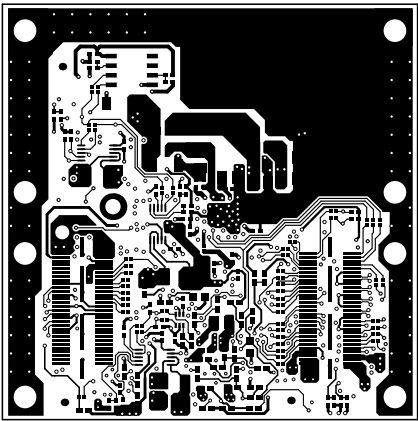
ALL ARTWORK VIEWED FROM TOP SIDE	BOARD #: PROC073	REV: A	SUN REV: Not In VersionControl
LAYER NAME = Layer 3 - Sig1	TID #: N/A		
PLOT NAME = Signal Layer 2	GENERATED : 8/28/2018 2:54:34 PM		TEXAS INSTRUMENTS



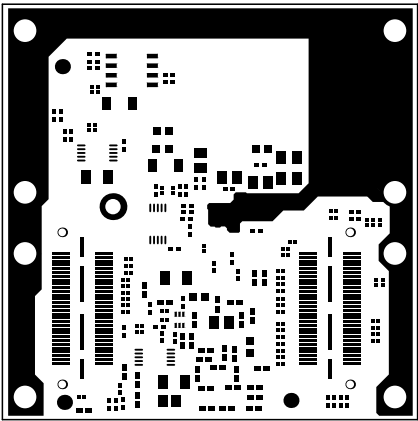
ALL ARTWORK VIEWED FROM TOP SIDE	BOARD #: PROC073	REV: A	SUN REV: Not In VersionControl
LAYER NAME = Layer 4 - Sig2	TID #: N/A		
PLOT NAME = Signal Layer 3	GENERATED : 8/28/2018 2:54:35 PM		TEXAS INSTRUMENTS



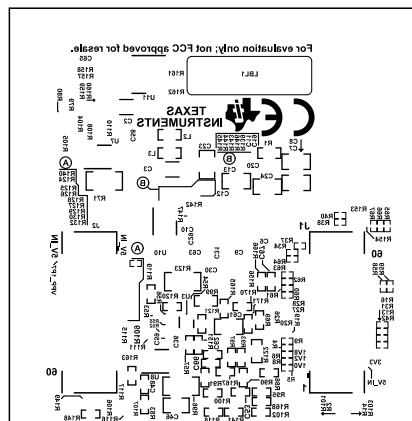
ALL ARTWORK VIEWED FROM TOP SIDE	BOARD #: PROC073	REV: A	SUN REV: Not In VersionControl
LAYER NAME = Layer 5 - GND2	TID #: N/A		
PLOT NAME = Signal Layer 4	GENERATED : 8/28/2018 2:54:37 PM		TEXAS INSTRUMENTS



ALL ARTWORK VIEWED FROM TOP SIDE	BOARD #: PROC073	REV: A	SUN REV: Not In VersionControl
LAYER NAME = Bottom Layer	TID #: N/A		
PLOT NAME = Bottom Layer	GENERATED : 8/28/2018 2:54:38 PM		TEXAS INSTRUMENTS



ALL ARTWORK VIEWED FROM TOP SIDE	BOARD #: PROC073	REV: A	SUN REV: Not In VersionControl
LAYER NAME = Bottom Solder	TID #: N/A		
PLOT NAME = Bottom Solder Mask	GENERATED : 8/28/2018 2:54:40 PM		TEXAS INSTRUMENTS



ALL ARTWORK VIEWED FROM TOP SIDE	BOARD #: PROC073	REV: A	SUN REV: Not In VersionControl
LAYER NAME = Bottom Overlay	TID #: N/A		
PLOT NAME = Bottom Overlay	GENERATED : 8/28/2018 2:54:41 PM		TEXAS INSTRUMENTS

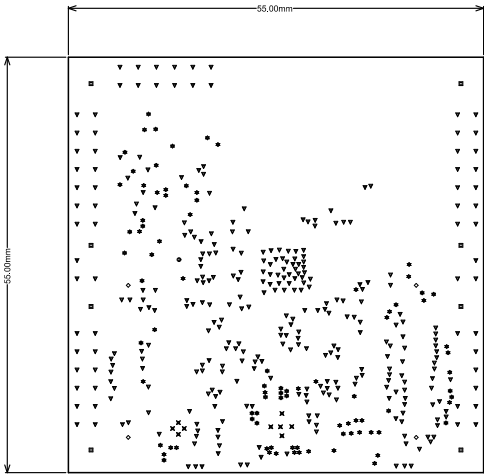
Drill Table: Top Layer to Bottom Layer

Symbol	Hit Count	Finished Hole Size	Plated	Hole Type	Physical Length	Rout Path Length	Drill Layer Pair
✕	9	7.87mil (0.200mm)	PTH	Round	-	-	Top Layer - Bottom Layer
✱	89	10.00mil (0.254mm)	PTH	Round	-	-	Top Layer - Bottom Layer
▼	340	12.20mil (0.310mm)	PTH	Round	-	-	Top Layer - Bottom Layer
◇	4	40.16mil (1.020mm)	NPTH	Round	-	-	Top Layer - Bottom Layer
●	1	80.00mil (2.032mm)	PTH	Round	-	-	Top Layer - Bottom Layer
■	8	118.11mil (3.000mm)	PTH	Round	-	-	Top Layer - Bottom Layer
	451 Total						

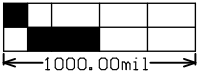
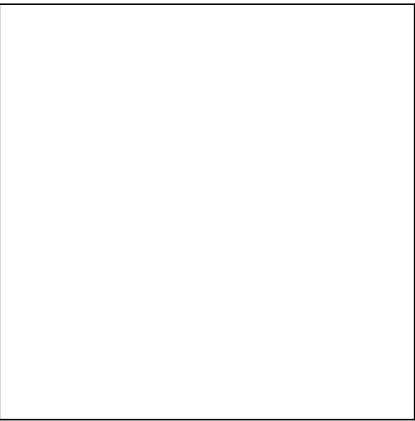
FOR PTH +/- 3MIL
FOR NPTH +/- 2MIL
FOR 7.874MIL DRILL +0/-7.874MIL
FOR 10MIL DRILL +0/-10MIL
FOR 12.2MIL DRILL +0/-12.2MIL

Drill Table: Layer 1 To Layer 2

FOR 5.9MIL DRILL +0/-5.9MIL



ALL ARTWORK VIEWED FROM TOP SIDE	BOARD #: PROC073	REV: A	SUN REV: Not In VersionControl
LAYER NAME = Drill Drawing	TID #: N/A		
PLOT NAME = Drill Drawing	GENERATED : 8/28/2018 2:54:43 PM	TEXAS INSTRUMENTS	



1000.00mil

ALL ARTWORK VIEWED FROM TOP SIDE	BOARD #: PROC073	REV: A	SUN REV: Not In VersionControl
LAYER NAME = MI Board Outline	TID #: N/A		
PLOT NAME = Board Dimensions	GENERATED : 8/28/2018 2:54:53 PM		TEXAS INSTRUMENTS